

0638-001

105

REGENCY LAKE ESTATES

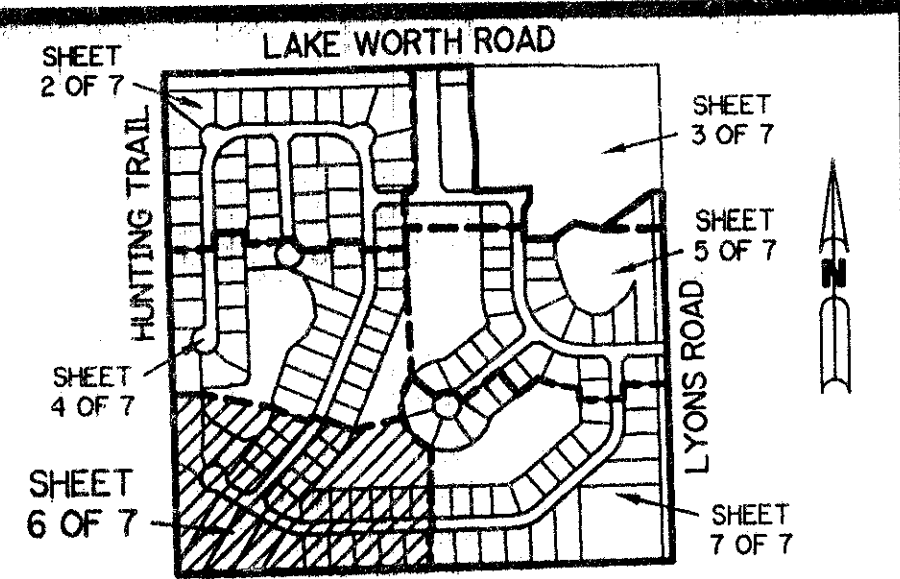
A PLANNED UNIT DEVELOPMENT
BEING A REPLAT OF A PORTION OF TRACTS 1, 2, 3, 12, 13, 14, 15, 16, AND 17 AND ASSOCIATED
ABANDONED RIGHT-OF-WAY ALL IN BLOCK 27 ACCORDING TO THE PLAT OF PALM BEACH FARMS CO. PLAT NO. 3,
AS RECORDED IN PLAT BOOK 2, PAGE 45, PUBLIC RECORDS OF PALM BEACH COUNTY, FLORIDA.
LYING IN SECTION 30, TOWNSHIP 44 SOUTH, RANGE 42 EAST.

SHEET 6 OF 7 SEPTEMBER, 1994

THIS INSTRUMENT PREPARED BY
PERRY C. WHITE P.L.S. 4213 STATE OF FLORIDA
LAWSON, NOBLE AND ASSOCIATES, INC.
ENGINEERS PLANNERS SURVEYORS
WEST PALM BEACH, FLORIDA

*PET. 94-4
CURRENT
5/2/2/I*

*OVERALL
KENT PUD*



KEY MAP
N.T.S.

N 01°01'41" W
1308.72' (TOTAL)

THE HUNT
(P.B. 32, PGS. 116-125)



SCALE: 1" = 40'

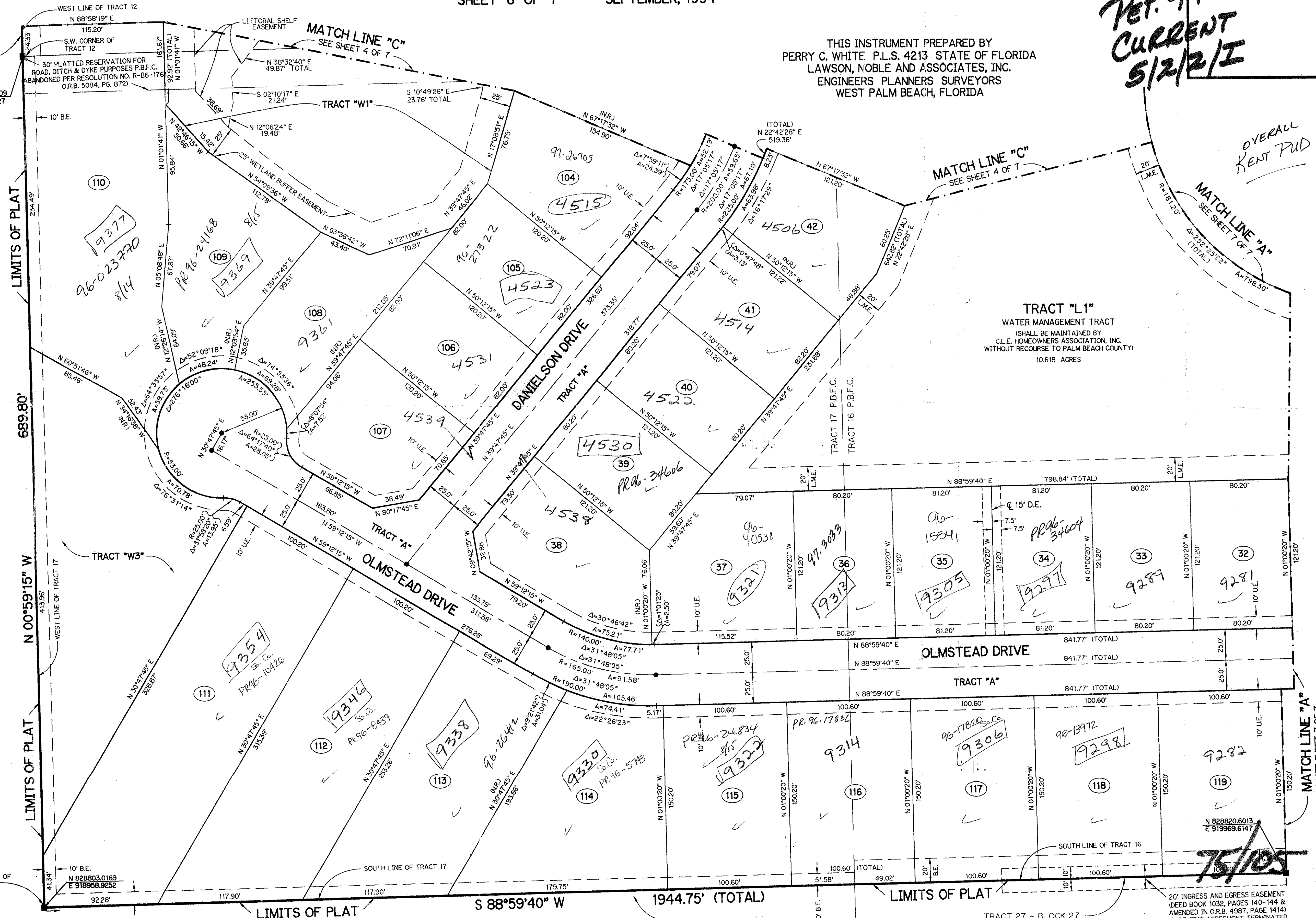
THE HUNT
(P.B. 32, PGS. 116-125)

LEGEND:

- PERMANENT REFERENCE MONUMENT, PLS #4213
- ▲ PERMANENT CONTROL POINT, PLS #4213
- △ DELTA ANGLE
- A ARC LENGTH
- B.E. BUFFER EASEMENT
- D.E. DRAINAGE EASEMENT
- FPL FLORIDA POWER & LIGHT COMPANY
- L.M.A.E. LAKE MAINTENANCE ACCESS EASEMENT
- L.M.E. LAKE MAINTENANCE EASEMENT
- L.W.D.D. LAKE WORTH DRAINAGE DISTRICT
- N.R. NOT RADIAL
- N.T.S. NOT TO SCALE
- O.R.B. OFFICIAL RECORD BOOK
- P.B. PLAT BOOK
- P.B.F.C. BLOCK 27, PALM BEACH FARMS CO. PLAT NO. 3 (PLAT BOOK 2, PAGE 45)
- PGS. PAGES
- P.L.S. PROFESSIONAL LAND SURVEYOR
- R. RADIUS
- R/W. RIGHT-OF-WAY
- U.E. UTILITY EASEMENT
- S.T. SURVEY TIE LINE

SUBDIVISION * Regency Lake Estates
BOOK 75 PAGE 105
FLOOD ZONE B FLOOD MAP # 170A
QUAD # 48 ZONING PUD
SE 94-04
PUD NAME 30/44/42
ZIP CODE 33467

TAZ-738



MATCH LINE "C"
SEE SHEET 4 OF 7

MATCH LINE "C"
SEE SHEET 4 OF 7

MATCH LINE "A"
SEE SHEET 7 OF 7

TRACT "L1"
WATER MANAGEMENT TRACT
(SHALL BE MAINTAINED BY
C.L.E. HOMEOWNERS ASSOCIATION, INC.
WITHOUT RECOURSE TO PALM BEACH COUNTY)
10.618 ACRES

OLMSTEAD DRIVE

TRACT "A"

TRACT "A"

TRACT "A"

TRACT "A"

TRACT "A"

TRACT "A"

TRACT "A"

TRACT "A"

TRACT "A"

TRACT "A"

TRACT "A"

20' INGRESS AND EGRESS EASEMENT
DEED BOOK 1032, PAGES 140-144 &
AMENDED IN O.R.B. 4987, PAGE 1414
EASEMENT AGREEMENT TERMINATED
PER O.R.B. 8486, PG. 1605)

0638-001

REGENCY LAKE ESTATES